

Creepy Crawly Collaboration



About

To celebrate all our creepy crawlies and their importance to our ecosystems, from wiggly worms to buzzy bees, sneaky spiders to beautiful butterflies.

Our definition includes: insects, arachnids, moths, butterflies, terrestrial crustaceans and any other invertebrates . Basically anything that creeps, wiggles or crawls!

Our collaboration between rural and suburban units to show how much we share as well as differ.

Badges cost £1.50 with proceeds split between Hautbois Rangers and 1st Northwood Brownies.

About Us

Hautbois Rangers, Girlguiding Norfolk



We meet at a village hall in Norfolk, with a playing field and wildlife garden next to us. We are a short walk away from the Norfolk Broads, with its amazing habitat for creepy crawlies.

1st Northwood Brownies, Girlguiding Middlesex



West

We meet in suburban Greater London, we don't have as many fields as the rangers but there are lots of gardens and we are near to lots of woods and Ruislip Lido.

We collaborated on this badge to show the differences and similarities between the creepy crawlies that live nearby us. The brownies sent the rangers a letter and drawings, the rangers sent the brownies pictures of craft/food activities and word quizzes. As units, we choose activities to suit our meeting places and interests in order to gain the badge.

Contained within this pack

Introduction.....Pages 1 & 2

The Challenges.....Pages 3 to 8

Investigate.....Page 3

Habitats.....Page 4

Create.....Page 5

Cook.....Page 6

Collaborate.....Page 7

Celebrate.....Page 8

Order Form.....Page 9

More Ideas and Examples.....Pages 10 to 14

To achieve this challenge badge, complete at least ten challenges including a minimum of one challenge from each section. Some activities are longer than others so pick which ones suit your unit best. It can be completed by a single unit, as a district/division event, on a pack holiday or look at teaming up with a unit from a different area and compare your results. Suitable for all sections to enjoy.

Investigate



Why are creepy crawlies of all kinds so important for habitat creation and development? Investigate

- Find out the differences between the types of creepy crawly
- Identify the different parts of different invertebrates
- Invite a local beekeeper to tell you all about their bees
- Make a factfile for a creepy crawly of your choice
- Ask a local wildlife or woodland trust or an entomologist (insect expert), lepidopterist (butterfly expert), arachnologist (spider expert) or any other creepy crawly -ologist to talk to your unit about types of creepy crawlies
- Go on a bug hunt
- Go on a night bug hunt
- Go pond dipping for water based creepy crawlies
- Investigate what is living in your bug habitats (see section Habitats) after a period of time

Ideas & Examples

Resources

[The Woodland Trust - Identify Invertebrates](#)

[The Wildlife Trusts - wildlife-explorer - invertebrates](#)

[NFU 10 Earthworm Facts](#)

Check out books from your local library, for example:

- Collins Complete Guide to British Insects
- National Trust: Out and About Minibeasts Explorer

Unit Meeting Activities

Rainbows: Bug Hunt from [Pack 5](#), Waggle and Seek from [Pack 5](#), Hide and Seek Hunt from [Pack 3](#)

Brownies: Life cycle survival and Insect invaders from [Pack 5](#)

Guides: Biodiversity Blitz from [Pack 4](#), A-Z in Nature in [Pack 5](#)

Rangers: Mission to Moth [download](#)

Habitats



It is important to make sure our creepy crawlies have places to live and thrive.

- Discover what makes the best habitats for a variety of creepy crawlies
- Create a bug hotel
- Create a bee friendly flower bomb
- Create a wormery
- Complete Ranger UMA Diversify Your Garden [from Pack 11](#)

Ideas and Examples

Create a wormery [RHS Activity Guide](#)

A simple wormery can be created in a 2 litre plastic bottle. First, cut the top from the bottle and keep it for later.

Fill the bottle with layers of sand, soil and compost adding sprays of water to ensure it is damp.

Wrap paper around the outside of the bottle to keep it dark for the worms.

Find and add some worms to the bottle, adding some worm

food like vegetable peelings before putting the lid back on. Be sure to release the worms after no more than a week and keep them fed and moist.

Create a bug hotel

Option 1: Brownie UMA Bottle Mansions available as a free download in [UMA Pack 3](#)

Option 2: Wooden Bug Hotel

For a more complex build, create a wooden bug hotel using Skills for My future DIY skills to build a box and insert shelves and dividers to fill with different bug hotel materials, like twigs, pine cones, hollow stems, dead grass and tree bark as described in this [Woodland Trust Blog](#)

Option 3: Buy a bug hotel pack like these on [Baker Ross](#)

Create

Unleash your creative side by making creepy crawly inspired crafts, poems or games.

- Make a craft creepy crawly from recycling
- Crochet a creepy crawly
- Make a creepy crawly fancy dress outfit
 - Make from recycling to achieve Brownie UMA Trash Fashion
- Write a creepy crawly inspired poem
- Make a pompom creepy crawly
- Paint a creepy crawly
- Create a creepy crawly board game
- Make a creepy crawly mosaic
- Make a creepy crawly from clay or playdough
- Make a creepy crawly from items from nature



Ideas & Examples

Crochet a Creepy Crawly

Option 1: Crochet flat circles

- To make a caterpillar, sew together 3, 4 or 5 flat circles. Add pipe cleaner or crochet cord tentacles on their heads.

-To make a lady bird, crochet a large red circle and attach black button spots and a smaller black circle for a head

Option 2: Crochet a 3-D insect using a free online pattern

Write a creepy crawly inspired poem

Try creating acrostic poems using names of different creepy crawlies like:

Buzzing

Energetic

Environment

Savers

Create a Creepy Crawly Board Game

Using inspiration from board games like snakes and ladders or more complex games for Guides and Rangers.

Cook

Get creative in the kitchen inspired by creepy crawlies.

- Create a creepy crawly of your choice from:
 - Cake and sweet treats
 - Digestive biscuits and icing
 - Peppermint creams
 - Fruit
 - Vegetables
- Make an edible creepy crawly habitat for gummy worms
- Make butterfly cakes
- Make honey cake
- Have a honey tasting session
- Have a supermarket caterpillar cake taste off

Ideas and Examples

Honey Tasting

Try tasting different honey from different regions and types from the supermarket; find out if any local beekeepers produce their own. You can taste it on its own or on toast or crackers.

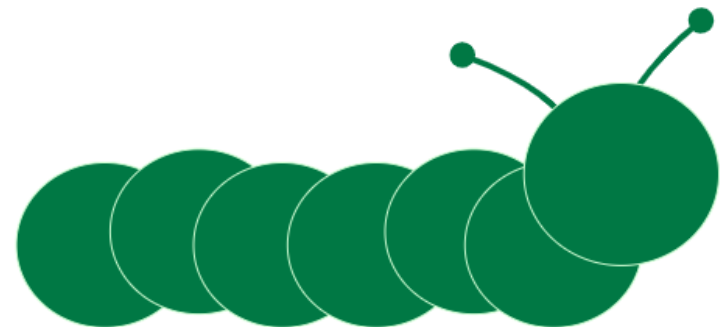
Come up with a way of categorising the honey and potentially use the Honey Aroma and Tasting Wheel found here: [Honey Tasting Article- Dummies](#)

Edible Gummy Wormery

Using what you have learnt in Investigate and Habitats about what worms like, use your imagination to create an edible version for some gummy worms.

Crumbled biscuits and brownies could make sand and soil, chocolate fingers and mini rolls make good branches and logs.

Once your habitat is created, grab a fork and dig in!



Collaborate

Join forces with others to discover more and take action.

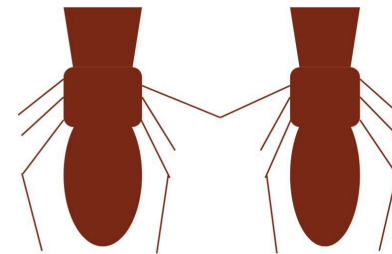
- Get in touch with a unit in another part of the country to see how your local habitats differ
- Work with a local wildlife or woodland trust or an entomologist (insect expert), lepidopterist (butterfly expert) or arachnologist (spider expert) to identify ways to help creepy crawlies locally
- Work with the owners of your unit meeting place to create a nature area, potentially to include your bug hotels made in the Habitat section
- Create an action plan to improve creepy crawly habitats
- Fundraise for your local wildlife or woodland trust to create creepy crawly habitats
 - Hold a bake sale of your creepy crawly cake creations from the Cook section

Ideas and Examples

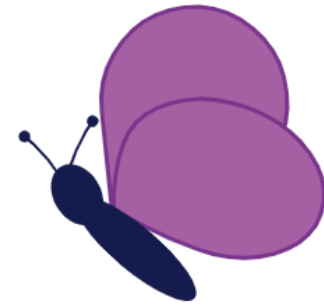
Unit Collaborations

Try and find a unit with a different location type e.g. rural, urban or suburban.

You could meet in person, virtually or become pen pals. Find out about how their location differs from yours by asking questions and comparing your answers.



Celebrate



Celebrate both you achieving this challenge and the positive impact of creepy crawlies!

- Have a creepy crawly party (potentially wearing your fancy dress outfit and using your crafts as decorations from the Create section)
- Sing some creepy crawly songs.
- Play some creepy crawly games, like Bug Bingo or the board games you made for the Create section.
- Dance like a creepy crawly
- Create a poster or display to celebrate your favourite creepy crawlies including how people can help create spaces for them

Ideas and Examples

Creepy Crawly Songs

Incy wincy spider, Baby Bumblebee, Worms, The Ugly Bug Ball

Creepy Crawly Dance Moves

Oops Upside Your Head

Become a millipede and do the Oops upside your head dance with shoes on your hands

Sit in a single file line with legs out in a v shape

The front person in the line is the leader

Start with arms above your head, tap and clap out the beat either side of the line

Other potential Dance moves

Learn to do the worm!

Make a conga line into a caterpillar!

Order Form

Number of Badges Required £1.50 each	
Postage: 1-5 £1.50, 5-20 £2.00, 21-50 £2.50, 50+ Request Quote	
Total	
Payment Method	Cash / Cheque / Bank Transfer

Delivery Details

Name	
Address	
Postcode	
Contact Phone or Email	

How did you find out about this badge?

To order Creepy Crawly Collaboration Challenge badges please complete and send this form to firstnorthwoodbrownies@gmail.com.



RE: Challenge Badge Branding Approval



Brandin... 09/09/2024
to me, Gina



Hello Tuesday,

Thanks so much for adjusting the badge design for Creepy, Crawly, Collaboration Challenge for Hautbois Rangers and 1st Northwood Brownies . I can confirm the design now meets our refreshed branding requirements. It is OK to produce in Masterbrand (White Trefoil on Girlguiding dark blue Pantone® 2766 C background).

Good luck with the challenge and the badge!

Kind Regards

Ruth

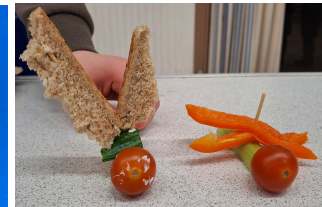
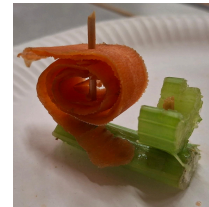
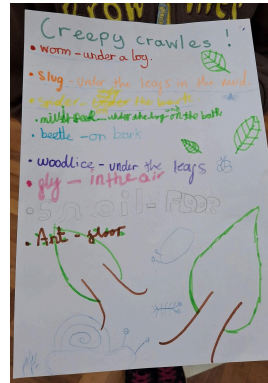
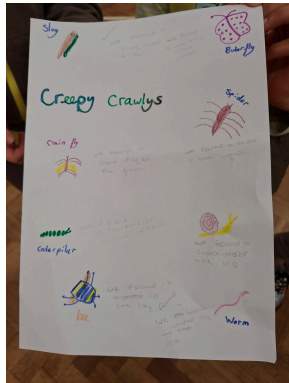
More Ideas and Examples

Investigate

Following a bug hunt through the woods, our Brownies made a colourful list of what they had found and where.

We used a free

downloadable



Cook

We created a wide range of creepy crawlies using various edible items!

Fruit and vegetables work well as do cupcakes, pretzels and chocolate fingers.





Habitats

Our tasty edible wormeries were created by crushing up biscuits and creating layers using popcorn, sweets and chocolate buttons.

A tasty home for our vegan gummy worms.



Whilst on Pack Holiday, our brownies built this bug hotel which now lives at our meeting place. It is made from an old pallet, an old garden table and plywood which the girls screwed together through

pre-drilled tracer holes - having learned how by doing the Skills for my Future UMA In a fix. They then stuffed the bug hotel full of foraged items such as sticks and pine cones alongside bamboo, sea shells and hay.

On the same holiday, the brownies made individual bug houses using pre-chopped pallet wood. They screwed together the pieces through pre-drilled holes and nailed plywood to the back. They filled the boxes to create lots of nooks and crannies.



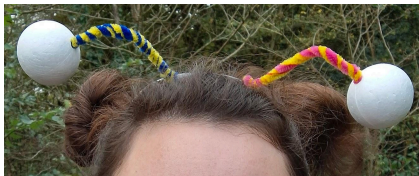
Alternatively the Bottle Mansions Brownie UMA is an easy way to complete this section.

Create

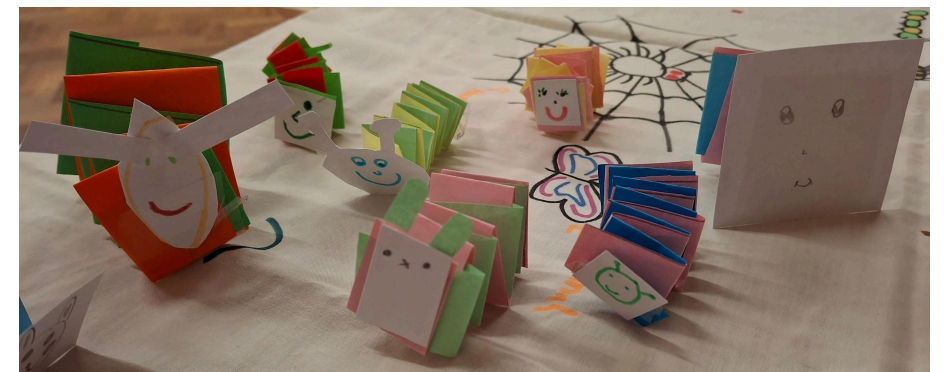
There are so many ways to create creepy crawlies! Here are a few of our examples:



These easy antennae are made by twisting pipe cleaners around an alic band, two on each side. Pierce a polystyrene sphere (these are 4cm diameter) with a pencil and poke the ends of the pipe cleaners into the holes.



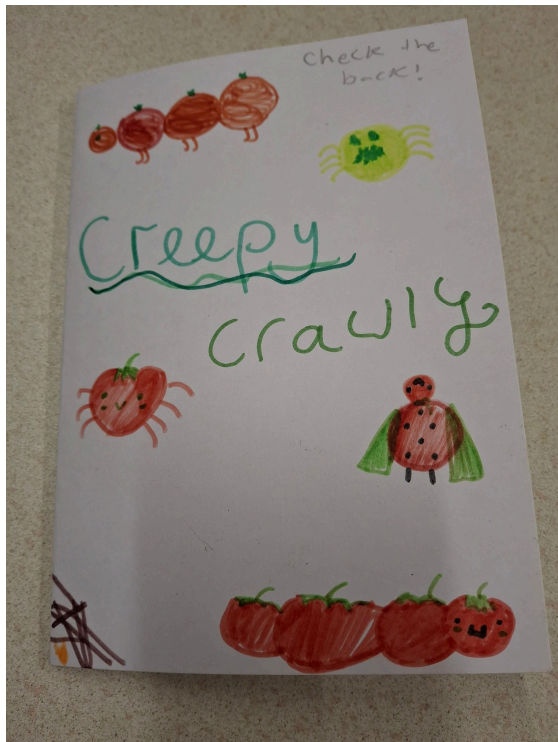
We created a creepy crawly tablecloth and decorations for our party! There is a moth, hand cutout butterfly and an origami ladybird.



Collaborate

The Rangers created a wordsearch for the brownies which you can print from the end of this pack!

The brownies sent the rangers a card explaining all the things they had done to complete the challenge - as you can see their favourite was making vegetable bugs!



Celebrate



A good game to adapt for a creepy crawly focus is the Teapot Game, also known as Body Parts and featured in the [Autumn Winter 24 Girlguiding Magazine](#). Here the Rangers are demonstrating their dragonfly.

Beetle Drive Game Rules:

You need a 6 to start, no parts can be drawn without a body.

You need a 5 for a head before you can add eyes or antennae

A complete beetle will have a body, a head, a tail, 2 eyes, 2 antennae and 6 legs.

Dice Rolls

1: Eye 2: Antenna 3: Leg 4: Tail 5: Head 6: Body

Wordsearch

Find the creepy crawlies:

ANT

BEE

BUTTERFLY

DRAGONFLY

EARWIG

GRASSHOPPER

LADYBIRD

SNAIL

SPIDER

WORM

A	W	S	A	I	L	O	I	C	A	D	B	L	B
S	E	T	M	D	A	T	T	Y	T	L	I	T	U
L	A	D	Y	B	I	R	D	P	L	G	W	A	T
D	D	N	L	Y	E	J	V	I	N	R	P	O	T
F	C	E	T	G	N	A	S	B	G	A	F	E	E
G	G	L	E	X	I	F	E	M	G	S	I	L	R
H	T	A	C	B	N	O	L	I	U	S	B	A	F
B	G	S	G	C	T	T	W	Q	W	H	E	Y	L
N	S	P	I	D	E	R	L	B	U	O	T	N	Y
J	V	L	T	O	A	N	V	A	E	P	R	J	A
K	O	D	B	E	E	I	L	Z	S	P	V	M	S
M	O	L	G	Y	T	N	E	D	Y	E	I	F	T
M	A	I	E	I	C	P	I	T	E	R	U	L	A
O	X	E	L	S	P	S	S	F	U	A	N	S	E
I	T	T	L	W	T	N	M	O	R	I	U	P	G
P	H	I	B	D	R	A	G	O	N	F	L	Y	B
P	H	Y	C	Y	M	I	W	J	B	N	B	W	E
Y	J	I	D	A	S	L	T	D	X	A	Y	T	D